

Retail/Restaurant Space

**327 Walnut St.
Space 101
Strawberry Square
Harrisburg, PA
Approx. 1,309 R.S.F**



Located in the heart of Harrisburg's central business district on the corner of 4th and Walnut Street and right across from the State Capital Complex. On-site retail, banking facilities, and attached parking garages.

Close proximity to UPMC Pinnacle Hospital, Hilton Harrisburg, Crowne Plaza, Whitaker Center, county and federal courthouses, Amtrak train station and the new Harrisburg University Health Science Education Center.



HBG Realty, LLC

320 Market St., St.273E
Harrisburg, PA 17101

Phone: 717-255-1058
Fax: 717-236-8975
E-mail: hbgrealty@harristown.net

Tracey J. Tressler, Associate Broker, REALTOR® Direct: 717-255-1025

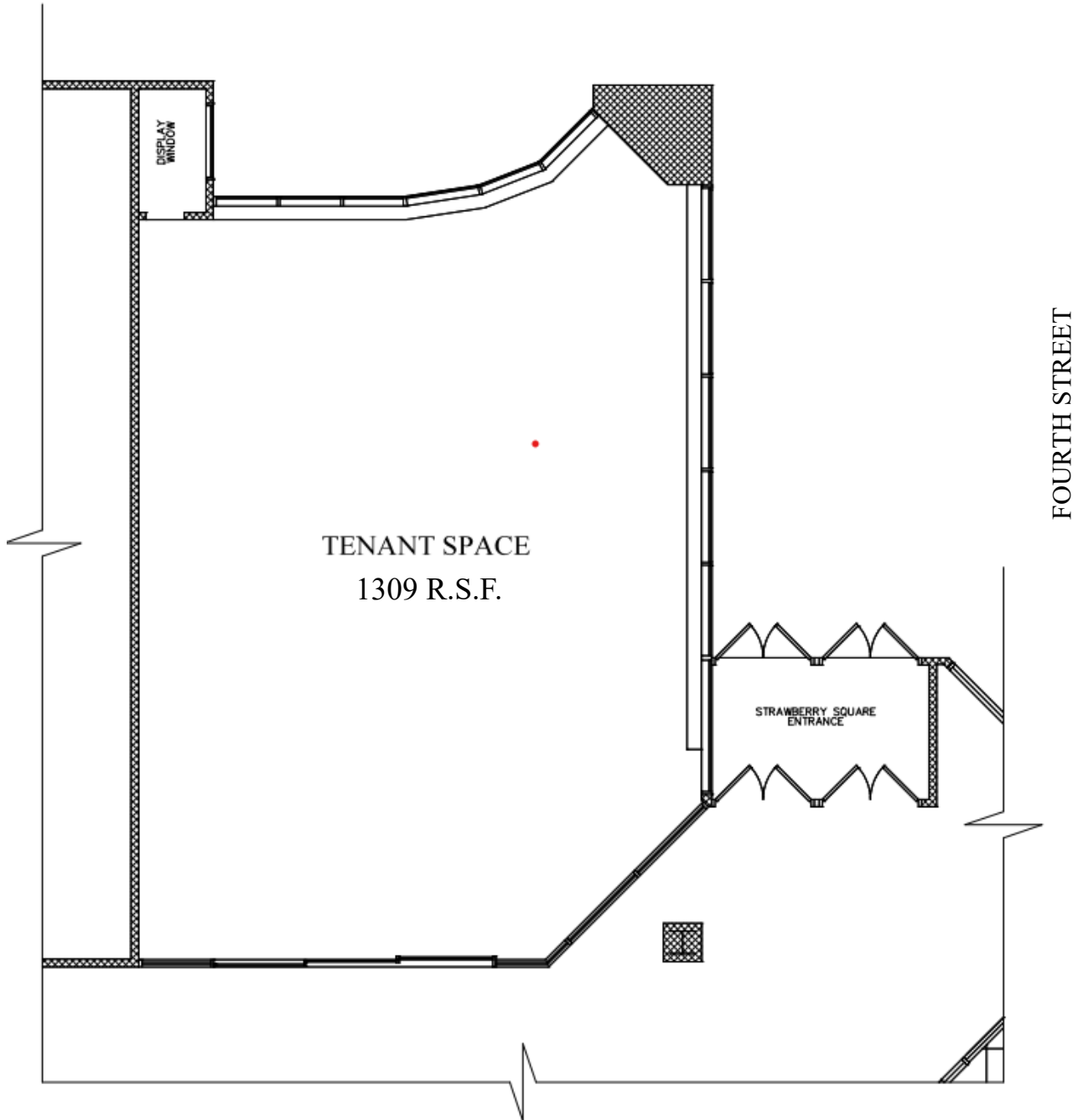


www.hbgrealty.net

Information furnished regarding property for sale or lease is from sources deemed reliable, but is not guaranteed. No warranty or representation is made as to the accuracy thereof and is submitted subject to errors, omission, change of price or other conditions, prior sale, lease or withdrawal without notice.

Retail - Restaurant Space #101 1st floor of Strawberry Square

WALNUT STREET



HBG Realty, LLC ▪ 320 Market Street, Suite 273E, Harrisburg, PA 17101
Phone: 717-255-1058 ▪ Fax: 717-236-8975 ▪ hbgrealty@harristown.net ▪ www.hbgrealty.net

Information furnished regarding property for sale or lease is from sources deemed reliable, but is not guaranteed. No warranty or representation is made as to the accuracy thereof and is submitted subject to errors, omission, change of price or other conditions, prior sale, lease or withdrawal without notice.

