

Office Suite 525

Bowman Tower
Strawberry Square
Harrisburg, PA
Approx. 1,238 R.S.F.



Located in Strawberry Square, the central area of Harrisburg's business district and right across from the State Capital Complex. On-site retail, banking facilities, and attached parking garages.

Close proximity to UPMC Pinnacle Hospital, Hilton Harrisburg, Crowne Plaza, Whitaker Center, county and federal courthouses & Amtrak train station and the new Harrisburg University Health Science Education Center.



HBG Realty, LLC

320 Market St., St.273E
Harrisburg, PA 17101

Phone: 717-255-1058
Fax: 717-236-8975
E-mail: hbgrealty@harristown.net

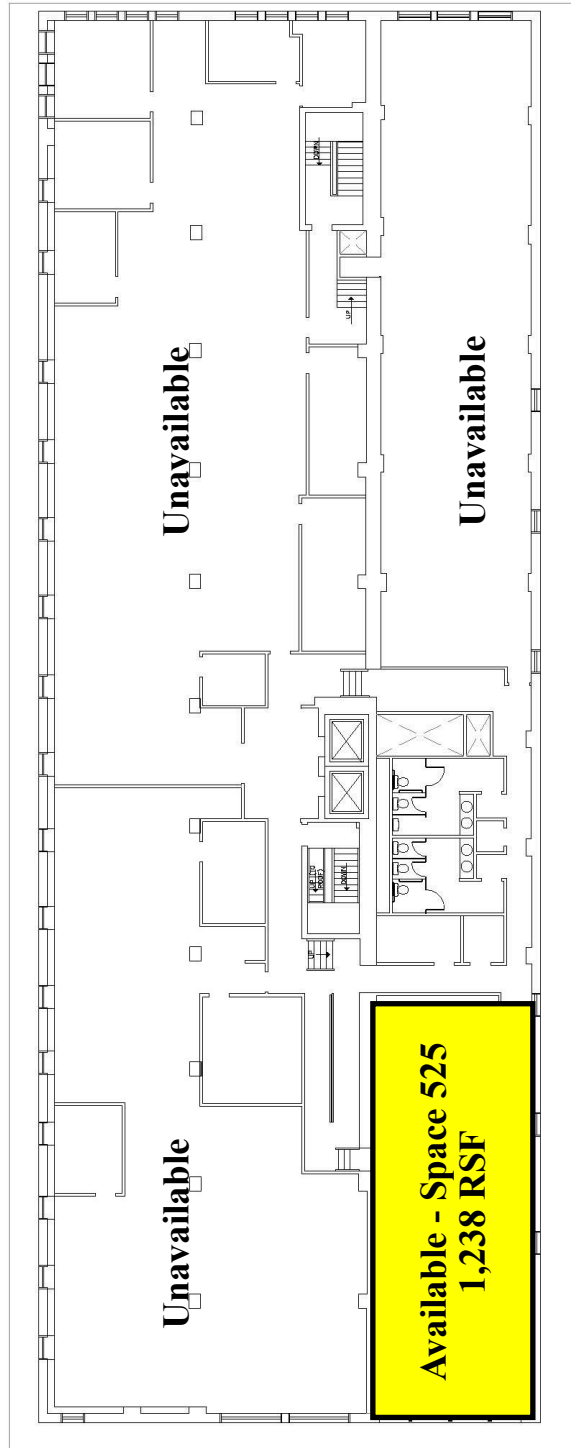


Tracey J. Tressler, Associate Broker, REALTOR® Direct: 717-255-1025

www.hbgrealty.net

Information furnished regarding property for sale or lease is from sources deemed reliable, but is not guaranteed. No warranty or representation is made as to the accuracy thereof and is submitted subject to errors, omission, change of price or other conditions, prior sale, lease or withdrawal without notice.

Office Suite 525 Bowman Tower - Strawberry Square



5TH FLOOR
BOWMAN TOWER
STRAWBERRY SQUARE
HARRISBURG, PA

HBG Realty, LLC ▪ 320 Market Street, Suite 273E, Harrisburg, PA 17101
Phone: 717-255-1058 ▪ Fax: 717-236-8975 ▪ hbgrealty@harristown.net ▪ www.hbgrealty.net

Information furnished regarding property for sale or lease is from sources deemed reliable, but is not guaranteed. No warranty or representation is made as to the accuracy thereof and is submitted subject to errors, omission, change of price or other conditions, prior sale, lease or withdrawal without notice.

