

Office Space

Space 201
Strawberry Square
Harrisburg, PA
Approx. 10,180 R.S.F



Interior 2nd floor office space located in the heart of Harrisburg's central business district. Right across from the Capitol complex and near a food court, fitness center, banking facilities and attached parking garages.

Close proximity to UPMC Pinnacle Hospital, Hilton Harrisburg, Crowne Plaza, Whitaker Center, county courthouse, Amtrak train station and the new Harrisburg University Health Science Education Center.



HBG Realty, LLC

320 Market St., St.273E
Harrisburg, PA 17101

Phone: 717-255-1058
Fax: 717-236-8975
E-mail: hbgrealty@harristown.net

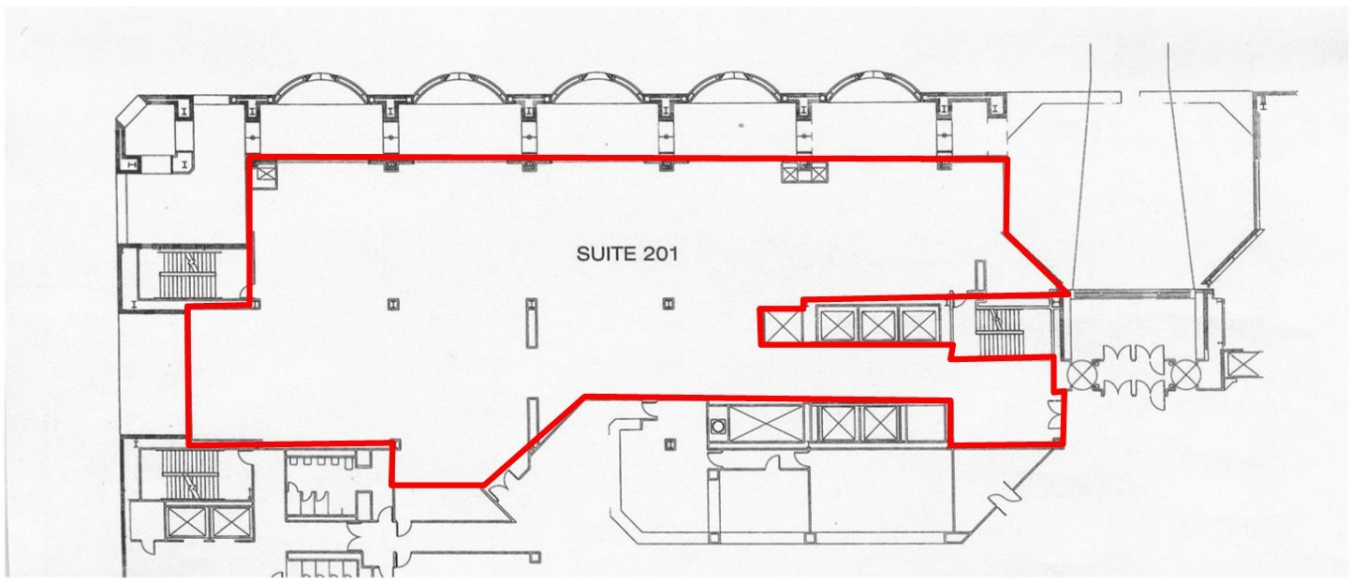


Tracey J. Tressler, Associate Broker, REALTOR® Direct: 717-255-1025

www.hbgrealty.net

Information furnished regarding property for sale or lease is from sources deemed reliable, but is not guaranteed. No warranty or representation is made as to the accuracy thereof and is submitted subject to errors, omission, change of price or other conditions, prior sale, lease or withdrawal without notice.

Office Space #201 2nd floor of Strawberry Square



2nd Floor
Strawberry Square
Harrisburg, PA

Approx. 8,930 USF
Approx. 10,180 RSF

HBG Realty, LLC ▪ 320 Market Street, Suite 273E, Harrisburg, PA 17101
Phone: 717-255-1058 ▪ Fax: 717-236-8975 ▪ hbgrealty@harristown.net ▪ www.hbgrealty.net

Information furnished regarding property for sale or lease is from sources deemed reliable, but is not guaranteed. No warranty or representation is made as to the accuracy thereof and is submitted subject to errors, omission, change of price or other conditions, prior sale, lease or withdrawal without notice.

