

Retail Space

Retail Space 12
225 Market Street
Harrisburg, PA

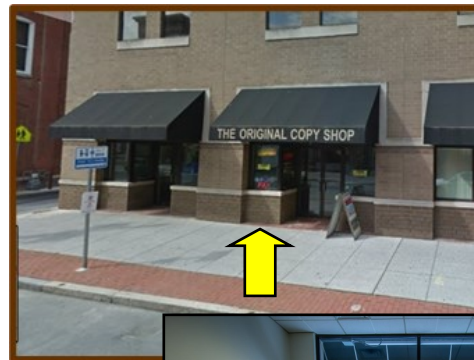
Approx. 1,080 Rentable Square Feet



Located in the heart of Harrisburg's central business district. One block away from Strawberry Square and directly across the street from the new Harrisburg University Health Science Education Center. Close proximity to UPMC Pinnacle Hospital, Hilton Harrisburg, Crowne Plaza, Whitaker Center, county and federal courthouses & Amtrak train station. About 3 blocks away from the Capitol Complex with an approx. 30,000 person workforce within a five block radius as of 2019.

PROPERTY INFORMATION

Municipality:	Harrisburg
Stories:	5
Basement:	Yes
Parking:	Nearby Garages
Sprinklers:	Yes
Restrooms:	2 per Floor
Elevators:	3
Exterior Lighting:	Yes
Signage:	On Directory & Suite Door
Availability:	Immediate
LEASE RATE:	\$19/sq. ft.
TYPE:	Modified Gross
BUILDOUT:	Negotiable
TENANT PAYS:	Utilities & In-Suite Janitorial



HBG Realty, LLC

320 Market St., St.273E
Harrisburg, PA 17101

Phone: 717-255-1058
Fax: 717-236-8975
E-mail: hbgrealty@harristown.net

Tracey J. Tressler, Associate Broker, REALTOR® Direct: 717-255-1025

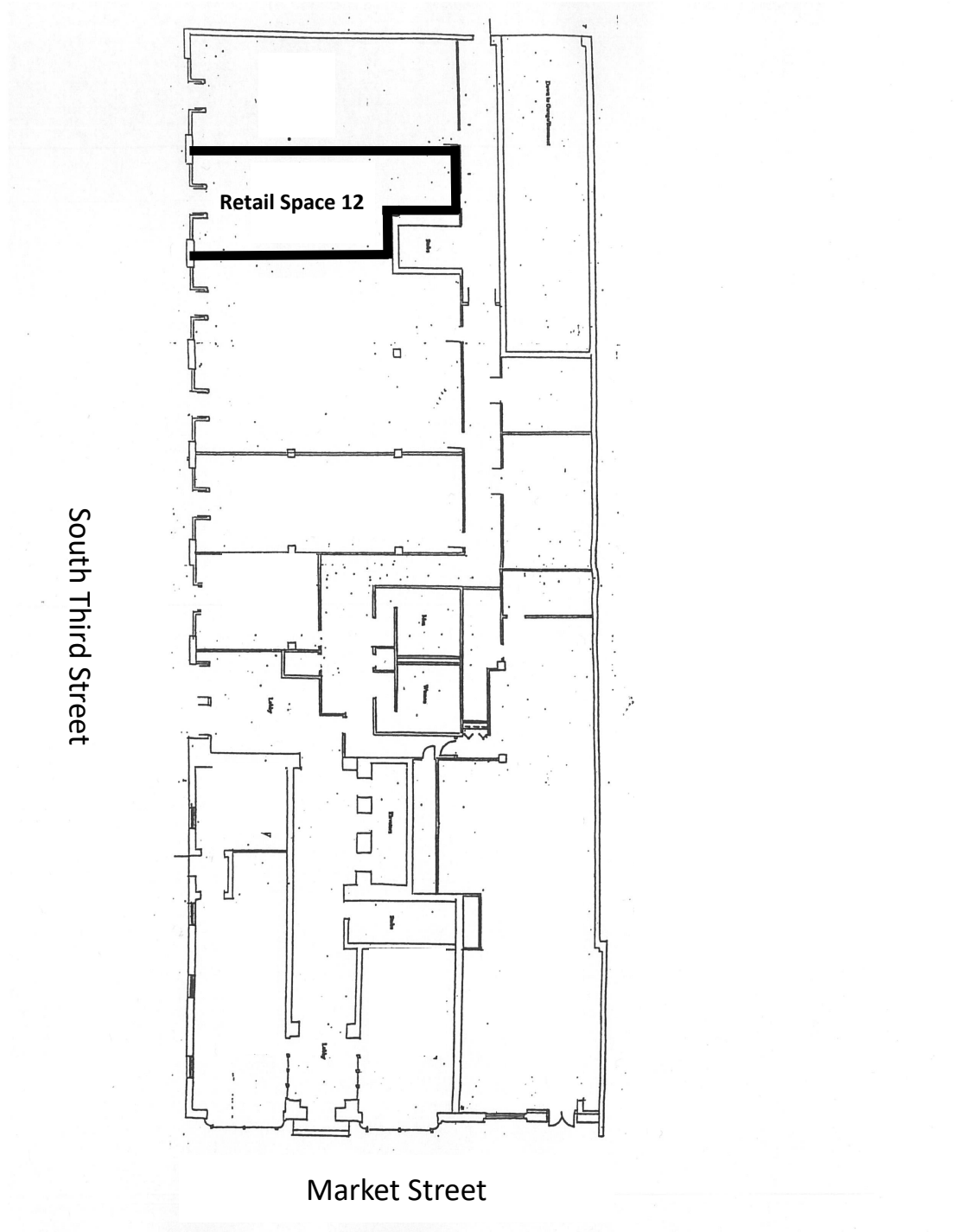


www.hbgrealty.net

Information furnished regarding property for sale or lease is from sources deemed reliable, but is not guaranteed. No warranty or representation is made as to the accuracy thereof and is submitted subject to errors, omission, change of price or other conditions, prior sale, lease or withdrawal without notice.

Retail Space - 225 Market Street

1st Floor - Retail Space 12



HBG Realty, LLC ▪ 320 Market Street, Suite 273E, Harrisburg, PA 17101

Phone: 717-255-1058 ▪ Fax: 717-236-8975 ▪ hbgrealty@harristown.net ▪ www.hbgrealty.net

Information furnished regarding property for sale or lease is from sources deemed reliable, but is not guaranteed. No warranty or representation is made as to the accuracy thereof and is submitted subject to errors, omission, change of price or other conditions, prior sale, lease or withdrawal without notice.

