

FOR LEASE

12 South Third Street | Harrisburg, Pennsylvania



PROPERTY OVERVIEW

LOCATION	12 South Third Street 1 st Floor
SPACE AVAILABLE	Approx. 1,080 Rentable Square Feet
LEASE RATE	Negotiable

DESCRIPTION

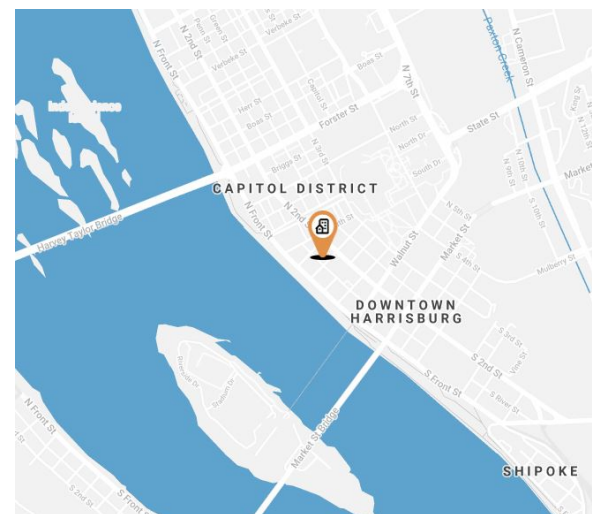
Amazing retail street space located in the heart of Harrisburg's Central business district. One block away from Strawberry Square's banking facilities and parking garages. Close proximity to the State Capital Complex, Hilton Harrisburg, Whitaker Center, county house, train station, bus station and restaurant row. 30,000 workforce within a five block radius.

Tracey Tressler

Associate Broker, REALTOR®

(717) 255-1025

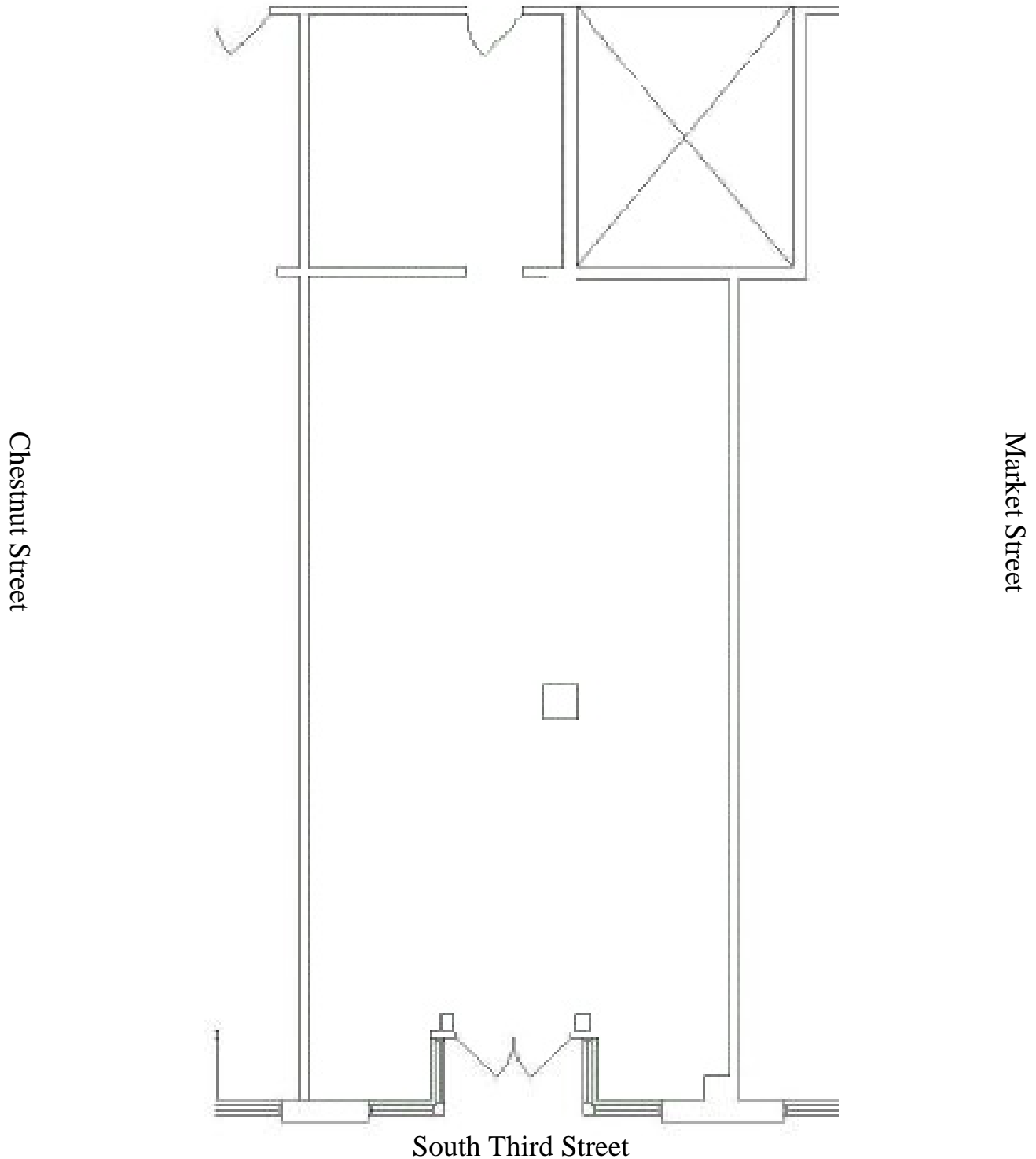
hbgrealty@harristown.net



FOR LEASE

12 South Third Street | Harrisburg, Pennsylvania

SITE PLAN



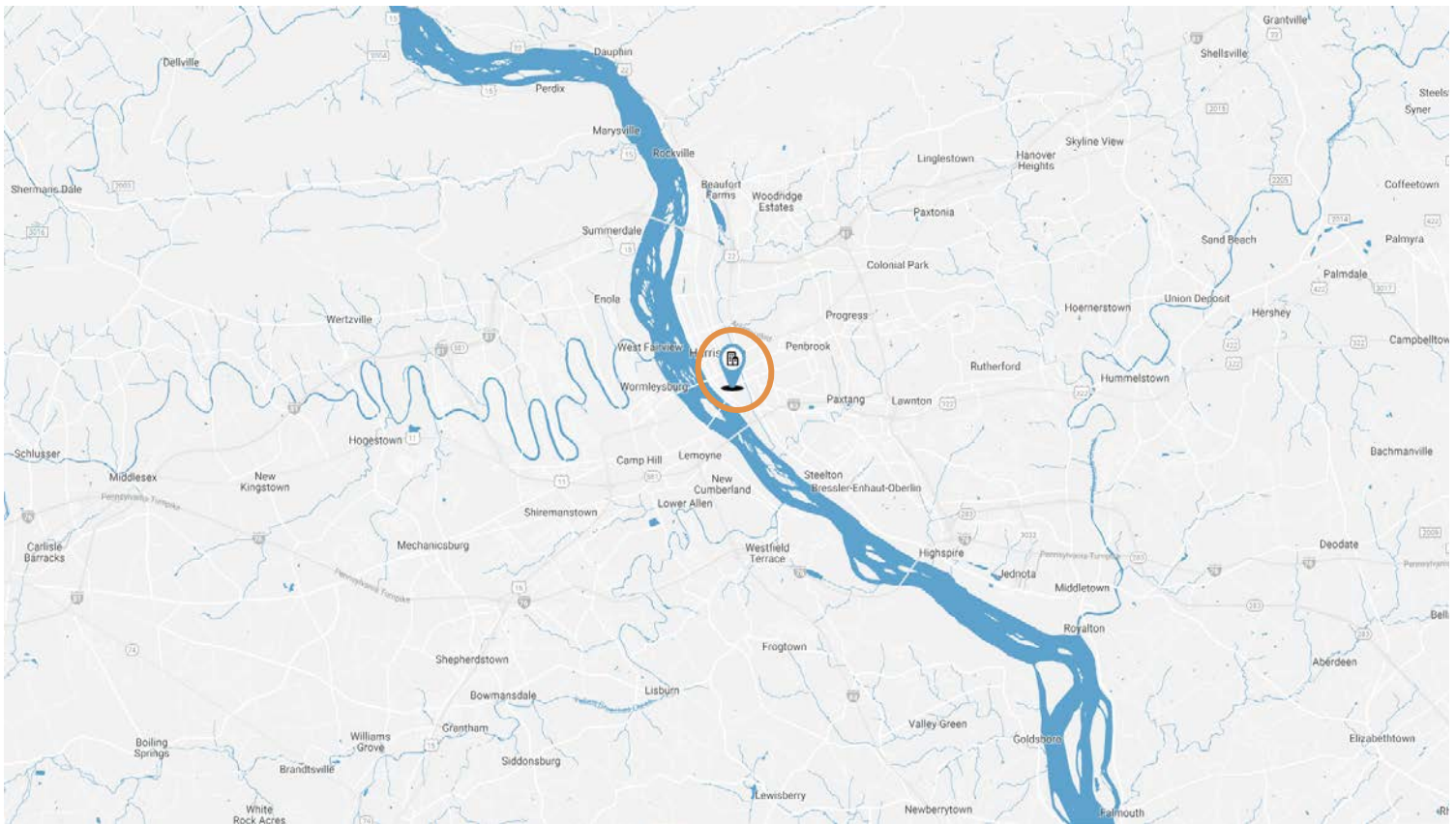
Information furnished regarding property for sale or lease is from sources deemed reliable, but is not guaranteed. No warranty or representation is made as to the accuracy thereof and is submitted subject to errors, omission, change of price or other conditions, prior sale, lease or withdrawal without notice.

FOR LEASE

12 South Third Street | Harrisburg, Pennsylvania

DEMOGRAPHICS

	Downtown & Midtown	City of Harrisburg	Cumberland & Dauphin Counties
Population	10,247	49,278	597,538
Households	5,417	20,188	239,571
Average Household Size	1.5	2.39	2.39
Average Household Income	\$49,158	\$49,194	\$71,323
Businesses	1,049	3,970	38,042
Employees	20,395	36,535	297,595



Information furnished regarding property for sale or lease is from sources deemed reliable, but is not guaranteed. No warranty or representation is made as to the accuracy thereof and is submitted subject to errors, omission, change of price or other conditions, prior sale, lease or withdrawal without notice.